

ICON 60

THE ACTIVE WHEELCHAIR



REHASENSE



ICON 60

THE ACTIVE WHEELCHAIR



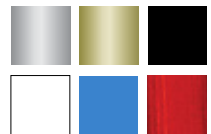
DESIGNED WITH HIGH ADJUSTABILITY

The ICON 60 is one of the most adaptable wheelchairs on the market. It has a strong yet lightweight frame made of 7000 aluminium alloy. The ICON 60 has been designed to allow the user to adapt various elements of the wheelchair to meet their individual needs.

Frame length, seat angle and seat position can all be adjusted to provide the user with a sportier riding experience. The backrest can be adjusted up to 20° forwards or up to 10° backwards while the backrest can also be completely folded for ease of transport.

FEATURES AT A GLANCE

- Active wheelchair in “open frame” design
- Multi-adjustable, seat depth, front and rear seat heights and centre of gravity
- Angle adjustable front forks
- Angle, height and tension adjustable backrest



COLOURS

Silver, Gold, Black matt, White, Blue, Red

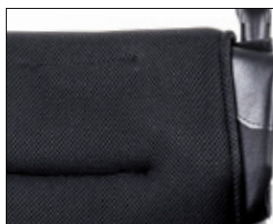
TECHNICAL DETAILS

| Weight from (without wheels and seat cushion) | SWL (Safe Weight Limit) | Seat width | Seat depth | Front frame angle (in deg) | Backrest angle | Front seat height | Rear seat height | Footrest height | Center of gravity adjustment | Backrest height |
|---|-------------------------|------------|-----------------------------|----------------------------|------------------------------------|-------------------|-------------------|--------------------------------|--------------------------------|--|
| from 6.9 kg | 120 kg | 36-48 cm | 40-49 cm (1.5 cm increment) | 90° (to the seat) | front: 0 -> +20 back: -10 -> 0° | 47 / 49 / 50 cm | 42 / 44.5 / 47 cm | 4 positions (1.5 cm increment) | 8 positions (1.5 cm increment) | fixed 25 / 30 / 35 cm variable 30 - 36 cm |

SPECIAL FEATURES



Backrest options: straight closed with or without foldable handles



Basic or sports seat made of 3D breathable mesh fabric



Side panel in carbon or aluminium, with or without fenders and optional padded armrests



Open footrest, also available in reinforced version for Track Wheel



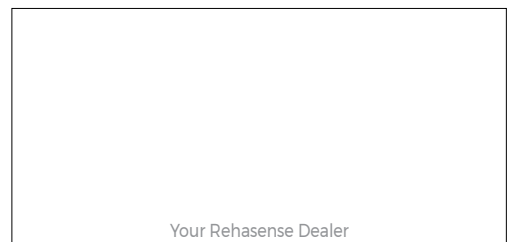
Horizontal scissor brake, with vertical sports brake option available



ICON 60 with TRACK WHEEL



ICON 60 with PAWS



Your Rehasense Dealer

VI-2022

Rehasense's quality management complies with both the ISO 9001 and ISO 13485 standards, as confirmed by TÜV NORD. Rehasense's medical devices are CE-marked and meet the requirements of EU Regulation 2017/745 (MDR).

