

Wonderseat Seating and  
Optional Mobility Bases

NZ & AU SCRIPT FORM

**Wonderseat**  
by **spex**

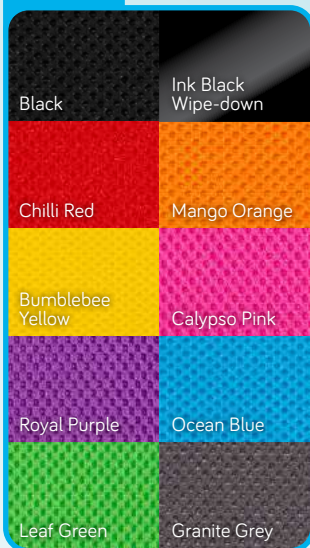


# Wheelchair Seating Package Options

**Wonderseat**

Space

## Colour



### Size 0

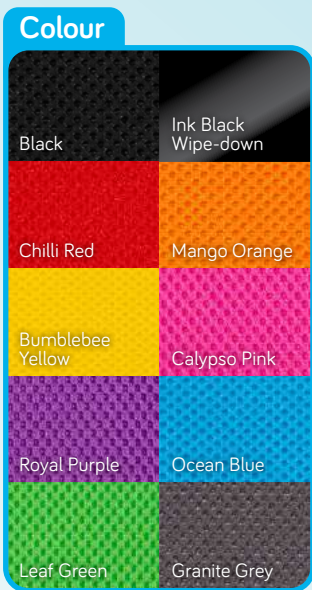
1420-1020-011

### Size 1

1420-1021-011

Wonderseat Constructa Cushion, 10" x 12"	Wonderseat Constructa Cushion, 12" x 16"
Growth-Adjust Spex Classic Back Support, 11-15" Growth	Growth-Adjust Spex Classic Back Support, 12-17" Growth
Drop Mount Hardware - Paediatric	
10"x12" Spex Seat Base with Quick Release Hardware	12"x16" Spex Seat Base with Quick Release Hardware
Spex Paediatric Standard Lateral Head Support Pad	
Wonderseat Quick-Release Head Support Hardware	
Narrow Straight Lateral Trunk Support Pad, Size 0, 8.5 x 11.5cm	Narrow Curved Lateral Trunk Support Pad, Size 1, 9.5 x 14.5cm
Paediatric Swing-Away Lateral Trunk Support Hardware	
Wonderseat Arm & Elbow Support Pad	Wonderseat Arm & Elbow Support Pad
Wonderseat Snug Thigh Support Pad, 19 x 8.5cm	Wonderseat Thigh Support Pad, 19 x 8.5cm
Wonderseat Side-Release Arm & Thigh Support Hardware	Wonderseat Complete-Release Arm & Thigh Support Hardware
Wonderseat Adjustable Medial Thigh Support, Pad height 7cm	
Wonderseat Padded Centrepoint Shoulder Harness	Wonderseat Padded Centrepoint Shoulder Harness
Wonderseat 4-Point Padded Hip Belt, Pad width 24cm	
Wonderseat Tray Table	
Wonderseat Tray Table Padding 1311-7410-013-C	
Spare Cushion Outer Cover 1102-1012-WSC-C	Spare Cushion Outer Cover 1102-1216-WSC-C

# Wheelchair Seating Package Options



**Size 0**  
1420-1010-010

**Size 1**  
1420-1011-010

Wonderseat Constructa Cushion, 10" x 12"	Wonderseat Constructa Cushion, 12" x 16"
Growth-Adjust Back Support. 11-15" Growth	Growth-Adjust Back Support. 12-17" Growth
Drop Mount Hardware - Paediatric	
10"x12" Spex Seat Base with Quick Release Hardware	12"x16" Spex Seat Base with Quick Release Hardware
Spex Comfort 250 Head Support Pad	
Wonderseat Lite Head Support Hardware	
Narrow Straight Lateral Trunk Support Pad, Size 0, 8.5 x 11.5cm	Broad Lateral Trunk Support Pad, Size 1, 10.5 x 13cm
Paediatric Axial Lateral Trunk Support Hardware	
Wonderseat Arm Support Pad	Wonderseat Arm Support Pad
Wonderseat Snug Thigh Support Pad, 19 x 8.5cm	Wonderseat Thigh Support Pad, 19 x 8.5cm
Wonderseat Side-Release Arm & Thigh Support Hardware	Wonderseat Complete-Release Arm & Thigh Support Hardware
Wonderseat Padded Centrepoint Shoulder Harness	Wonderseat Padded Centrepoint Shoulder Harness
Spex 2 point Padded Hip Belt, Pad Width 30cm	
Wonderseat Tray Table 1311-7410-013	
Wonderseat Tray Table Padding 1311-7410-013-C	
Spare Cushion Outer Cover 1102-1012-WSC-C	Spare Cushion Outer Cover 1102-1216-WSC-C

# Wheelchair Seating Scriptable Option

## Colour



## Cushion

### Wonderseat Constructa Cushion



Size 0, 10" x 12"  
1102-1012-WSC  
Size 1, 12" x 16"  
1102-1216-WSC

Cushion Spare Cover

## Back Support

### Growth-Adjust



Size 0, 12" x 11-15"  
1252-1211-OGA  
Size 0, 12" x 14-18"  
1252-1214-OGA  
Size 1, 14" x 12-17"  
1252-1412-OGA  
Size 1, 14" x 16- 21"  
1252-1416-OGA

### Growth-Adjust Spex Classic (Adaptable Contour)



Straight T Shape

Size 0, 12" x 11-15"  
1255-1211-OGA  
Size 0, 12" x 14-18"  
1255-1214-OGA  
Size 1, 14" x 12-17"  
1252-1412-OGA  
Size 1, 14" x 16-21"  
1255-1416-OGA

## Seat Base

### Quick Release Hardware



Size 0, 10" x 12"  
1008-1012-QRB  
Size 1, 12" x 16"  
1008-1216-QRB

### Fixed Seat Hardware



Size 0, 10" x 12"  
1008-1012-FXB  
Size 1, 12" x 16"  
1008-1216-FXB

## Back Support Hardware



Drop Mount Hardware - Paediatric  
1259-1400-00P



Single Mount Hardware  
1259-2100-100



Quad Mount Hardware  
1259-2400-100

## Head Support Pad



Circle 150  
1275-0011-000



Comfort 250  
1275-0031-000



Contour 250  
1275-0021-000



Paediatric Standard Lateral  
1275-0041-000



Paediatric Extended Lateral  
1275-0042-000

## Head Support Hardware



Wonderseat Quick-Release\*  
1274-3232-100



Wonderseat Lite\*  
1274-0232-100

## Lateral Trunk Support Hardware



Paediatric Axial Lateral  
1266-2613-100-[L/R]



Paediatric Swing-Away Lateral  
1266-2623-400  
Extender Kit for Paediatric Swing Away Lateral (Per Lateral)  
1266-2440-100

\*These products are designed to work as part of a complete Wonderseat Seating System, and are not compatible with other components of the Spex Seating range

## Lateral Trunk Support Pads

**Teardrop**



Left Right

**Size 0, 14 x 8cm**  
1266-305[1/2]-400

**Broad**



Left Right

**Size 1, 10.5 x 13 cm**  
1266-3031-400

**Size 2, 12.5 x 14 cm**  
1266-3032-400

**Narrow Straight**



Left Right

**Size 0, 8.5 x 11.5cm**  
1266-3010-400

**Size 1, 9.5 x 14.5cm**  
1266-3011-400

**Size 2, 9.5 x 18cm**  
1266-3012-400

**Narrow Curved**



Left Right

**Size 1, 9.5 x 14.5cm**  
1266-3021-400

**Size 2, 9.5 x 18cm**  
1266-3022-400

## Arm Support Pads

**Wonderseat Arm Support Pad\***



Left Right

**Size 0, 9 x 20cm**  
1156-6410-310-[L-R]

**Size 1, 9 x 25cm**  
1156-6411-310-[L-R]

**Wonderseat Arm & Elbow Support Pad\***




Left Right

**Size 0, 9 x 20cm**  
1156-6420-310-[L-R]

**Size 1, 9 x 25cm**  
1156-6421-310-[L-R]

## Arm & Thigh Support Hardware



**Wonderseat Side-Release\***  
1156-0403-130-[L/R]



**Wonderseat Complete-Release\***  
1156-0403-110-[L/R]

## Lateral Thigh Support Pads



Left Right

**Wonderseat Thigh Support Pad, 5" deep, 11.5 x 8.5cm\***  
1156-1105-400



Left Right

**Wonderseat Snug Thigh Support Pad, 8" deep, 19 x 8.5cm\***  
1156-1208-400-[L/R]



Left Right

**Wonderseat Thigh Support Pad, 8" deep, 19 x 8.5cm\***  
1156-1108-400



Left Right

**10" Thigh Support Pad, 26.5 x 9cm**  
1156-1010-400

## Medial Thigh Support



**Wonderseat Adjustable Medial Thigh Support, Pad height 7cm\***  
1162-1401-000



**Medial Thigh/Knee Block with Axial-Adjust Pad, Size 1, Pad height 9.5cm**  
1162-1601-000

## Tray Table



**Wonderseat Tray Table, 52cm x 42cm\***  
1311-7410-013



**Wonderseat Tray Table Padding\***  
1311-7410-013-C

## Anterior Pelvic Support



**Spex 2 Point Padded Hip Belt, Pad width 30cm**  
1405-6220-027



**Wonderseat 4-Point Padded Hip Belt, Pad width 24cm**  
1406-5420-027

## Anterior Trunk Support

**Wonderseat Padded Centrepoint Shoulder Harness\***



**Size 0, Pad height 22cm**  
1409-5660-017

**Size 1, Pad height 28cm**  
1409-5661-017

## Bit-Box



**Bit-Box\***  
Space Bounce Zoomy

\*These products are designed to work as part of a complete Wonderseat Seating System, and are not compatible with other components of the Spex Seating range

# Zippie IRIS Package Options

## Standard Package:

1562-2012-001

Black frame only, supplied in a 12" x 14" seat width and depth configuration.  
Full growth range listed below.

### Includes:

- True-fit growth system
- Tie downs
- Width adjusting system (10-18" included)
- 5" x 1.5" semi pneumatic front castors
- 16" Rear mag wheels; pneumatic with Airless Insert
- 90° legrest hangers with angle adjustable footplates
- Offset hanger mounts
- Height adjustable push handle
- Anti-tips
- Black Opal frame colour
- Foot operated tilt
- Foot operated brakes
- Medium seat depth range: 12-16"
- 0-55 degrees of rotation in space



## Wheel Lock

Push to Lock as additional to footlock	Push to Lock 6" Extensions	Drum Brakes 16" Pneumatic
1568-8455-000	1579-84-161930	1568-8452-16P/16S

## Footrest Hangers

### Change to 80° Front Mount Hanger (pair)

(when purchased with chair)  
1568-5080-000



### Front Mount Footrest Extension Tube

2" Pair  
1568-111505

4" Pair  
1568-111506

6" Pair  
1568-111507



# Footplates

## Heel Loops for Footplates

1403-6181-017



## Footplate Padding

1415-5312-300



## Spex Impact Guards

80 & 90  
Degree Hangers  
1415-5361-300



## Spex Calf Strap

12"  
1402-6171-017



# Tray

## Padded Travel Tray

**Small**  
1311-7441-209

(Hard tray included as standard  
with Wonderseat Space package).



# Canopy Options

## Bingo Canopy

Fits wheelchairs from  
10" wide to 16" wide.  
Includes free rain cover  
suitable for smaller users.

1800-7500-000



# Notes

## Further Information



Distributed by Medifab Ltd

[solutions@medifab.com](mailto:solutions@medifab.com)

[medifab.com](http://medifab.com)



DISTRIBUTED BY: